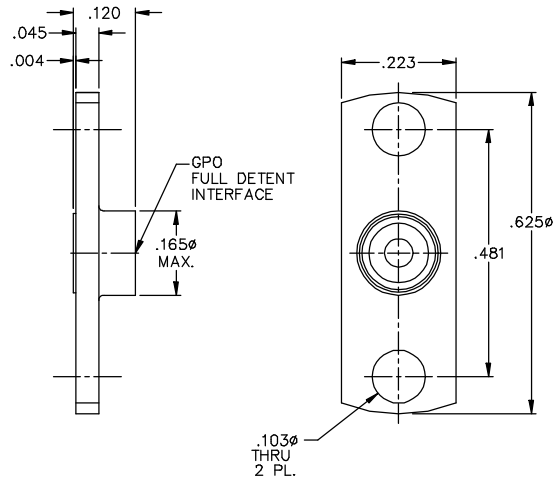


ALL RIGHTS ARE RESERVED BY THE PROPERTY OF GILBERT ENGINEERING CO., INC. NO PART OF THIS DRAWING IS TO BE REPRODUCED OR TRANSMITTED IN ANY FORM OR BY ANY MEANS, ELECTRONIC OR MECHANICAL, INCLUDING PHOTOCOPYING, RECORDING, OR BY ANY INFORMATION STORAGE AND RETRIEVAL SYSTEM, WITHOUT PERMISSION IN WRITING FROM GILBERT ENGINEERING CO., INC.

REV.	DESCRIPTION	DATE	APP'D.
C	SEE ECO GM-8509	7/24/98	

MATERIAL AND FINISH

SHROUD: CRES 303 PER ASTM A 484 AND ASTM A 582 OR ASTM A 555 AND ASTM A 581, PASSIVATE PER MIL-F-14072 E300.



ALL DIMENSIONS ARE IN INCHES

CAT. NO. 0119-948-3

CODE IDENT. NO. 82316

GILBERT ENGINEERING CO., INC.

BY	DATE	TITLE	DWG. NO.	REV
DEAN SINCLAIR	8-18-94	OUTLINE DRAWING FOR GPO FULL DETENT SHROUD (SMA HOLE PATTERN)	01-0119-948-3	C
ASSEMBLY PROCEDURES: NONE				
SOURCE FILE: MECR #552	SHT. 1 OF 1			